

Cisco – Troubleshooting OSPF

Table of Contents

<u>Troubleshooting OSPF</u>	1
<u>Interactive: This document offers customized analysis of your Cisco device</u>	1
<u>Introduction</u>	1
<u>Before You Begin</u>	1
<u>Conventions</u>	1
<u>Prerequisites</u>	1
<u>Components Used</u>	2
<u>Main Troubleshooting Flowchart</u>	2
<u>Troubleshooting OSPF Neighbor States</u>	3
<u>Troubleshooting the OSPF Routing Table</u>	4
<u>Troubleshooting OSPF Init State</u>	5
<u>Troubleshooting OSPF MTU</u>	6
<u>Troubleshooting OSPF Corrupt Packets</u>	7
<u>Troubleshooting OSPF Two-Way State</u>	8
<u>Troubleshooting OSPF Links</u>	9
<u>Troubleshooting Full Adjacency</u>	10
<u>Troubleshooting External Link-State Advertisements</u>	11
<u>Troubleshooting OSPF NBMA Networks</u>	12
<u>Troubleshooting Access Lists</u>	13
<u>Troubleshooting Neighbors over PRI</u>	13
<u>Troubleshooting Ping</u>	14
<u>Troubleshooting the OSPF Interface</u>	15
<u>Troubleshooting Frame Relay Environment</u>	16
<u>Troubleshooting External Route Problems</u>	17
<u>Troubleshooting Network Type</u>	18
<u>Troubleshooting OSPF Area Type</u>	19
<u>Troubleshooting the Hello/Dead Interval</u>	20
<u>Troubleshooting Access Lists</u>	21
<u>Troubleshooting OSPF NBMA Networks</u>	22
<u>Related Information</u>	22

Troubleshooting OSPF

Interactive: This document offers customized analysis of your Cisco device.

Introduction

Before You Begin

Conventions

Prerequisites

Components Used

Main Troubleshooting Flowchart

Troubleshooting OSPF Neighbor States

Troubleshooting the OSPF Routing Table

Troubleshooting OSPF Init State

Troubleshooting OSPF MTU

Troubleshooting OSPF Corrupt Packets

Troubleshooting OSPF Two-Way State

Troubleshooting OSPF Links

Troubleshooting Full Adjacency

Troubleshooting External Link-State Advertisements

Troubleshooting OSPF NBMA Networks

Troubleshooting Access Lists

Troubleshooting Neighbors over PRI

Troubleshooting Ping

Troubleshooting the OSPF Interface

Troubleshooting Frame Relay Environment

Troubleshooting External Route Problems

Troubleshooting Network Type

Troubleshooting OSPF Area Type

Troubleshooting the Hello/Dead Interval

Troubleshooting Access Lists

Troubleshooting OSPF NBMA Networks

Related Information

Introduction

This document provides troubleshooting information for common problems with Open Shortest Path First (OSPF). To see more information, or to go to the next flowchart, click the command boxes in red.

Before You Begin

Conventions

For more information on document conventions, see the Cisco Technical Tips Conventions.

Prerequisites

There are no specific prerequisites for this document.

Components Used

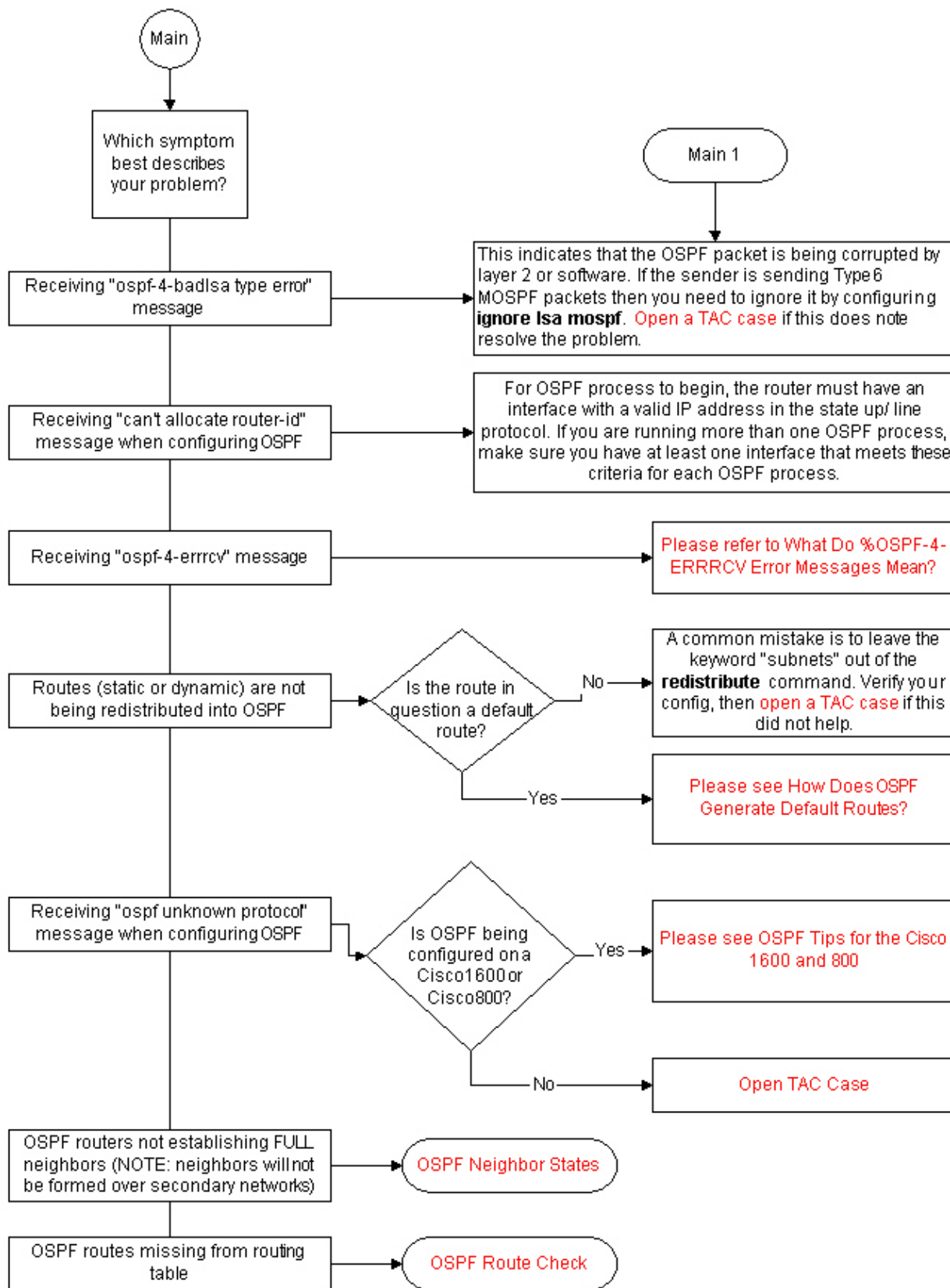
This document is not restricted to specific software and hardware versions.

The information presented in this document was created from devices in a specific lab environment. All of the devices used in this document started with a cleared (default) configuration. If you are working in a live network, ensure that you understand the potential impact of any command before using it.

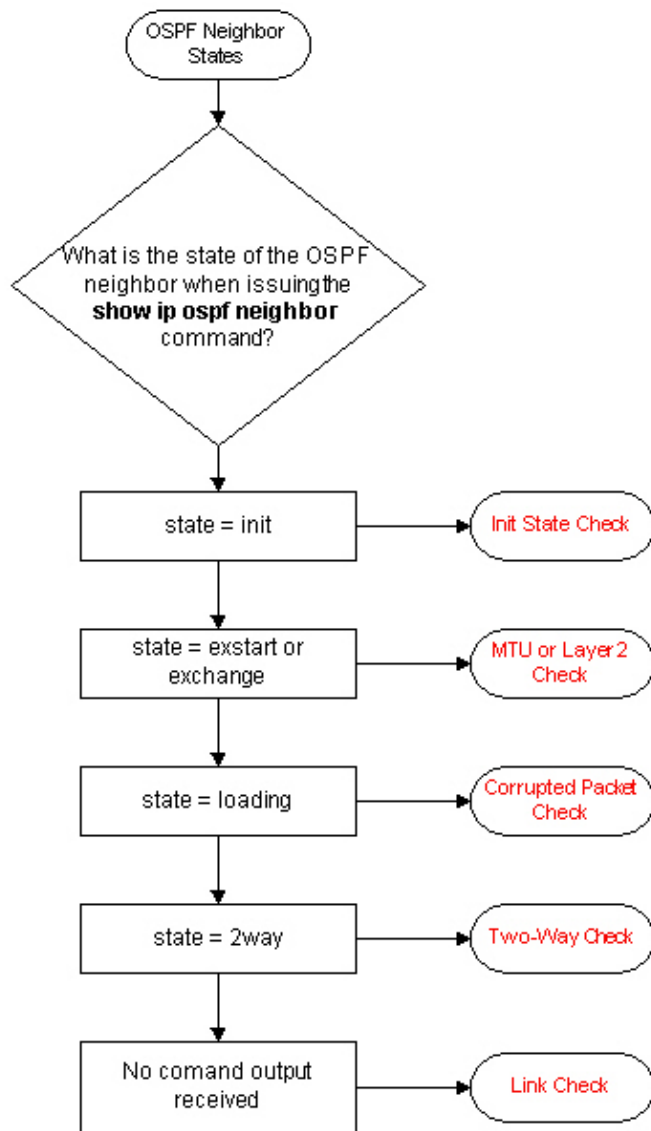
Main Troubleshooting Flowchart

If you have the output of a **show ip ospf neighbor**, **show ip ospf neighbor**, or **show tech-support** command from your Cisco device, you can use to display potential issues and fixes. To use, you must be a registered customer, be logged in, and have JavaScript enabled.

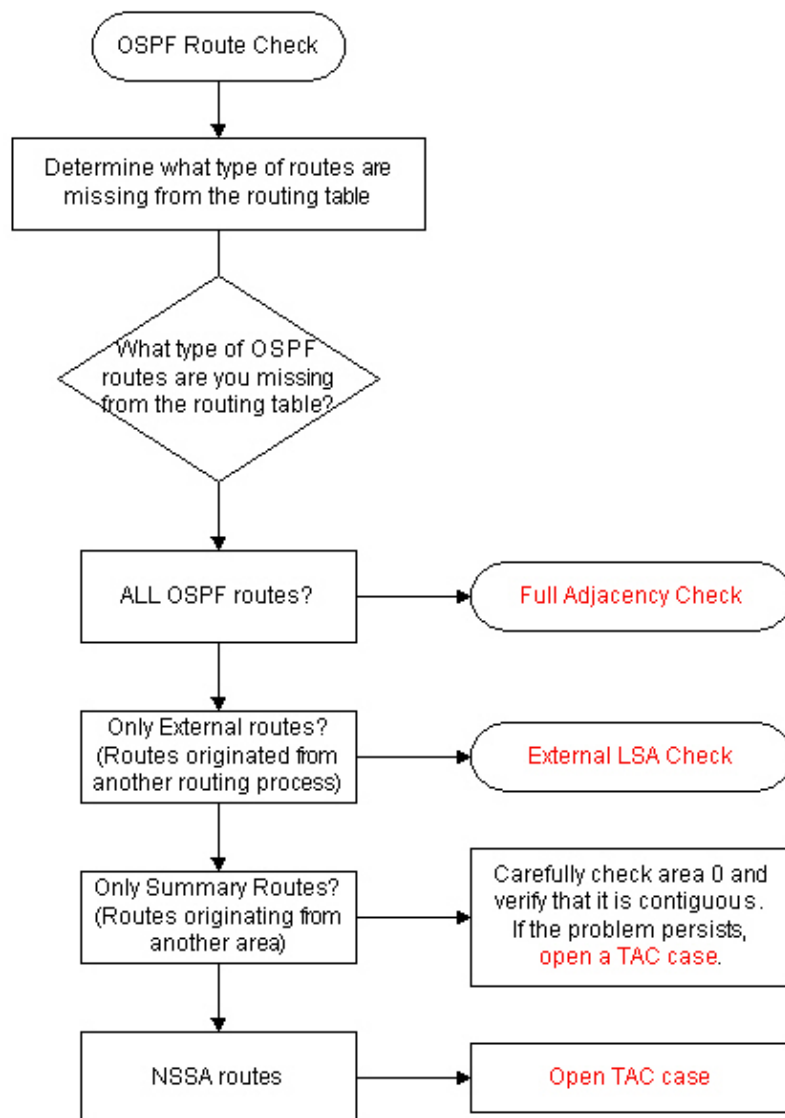
You can use Output Interpreter to display potential issues and fixes. To use Output Interpreter, you must be a registered customer, be logged in, and have JavaScript enabled.



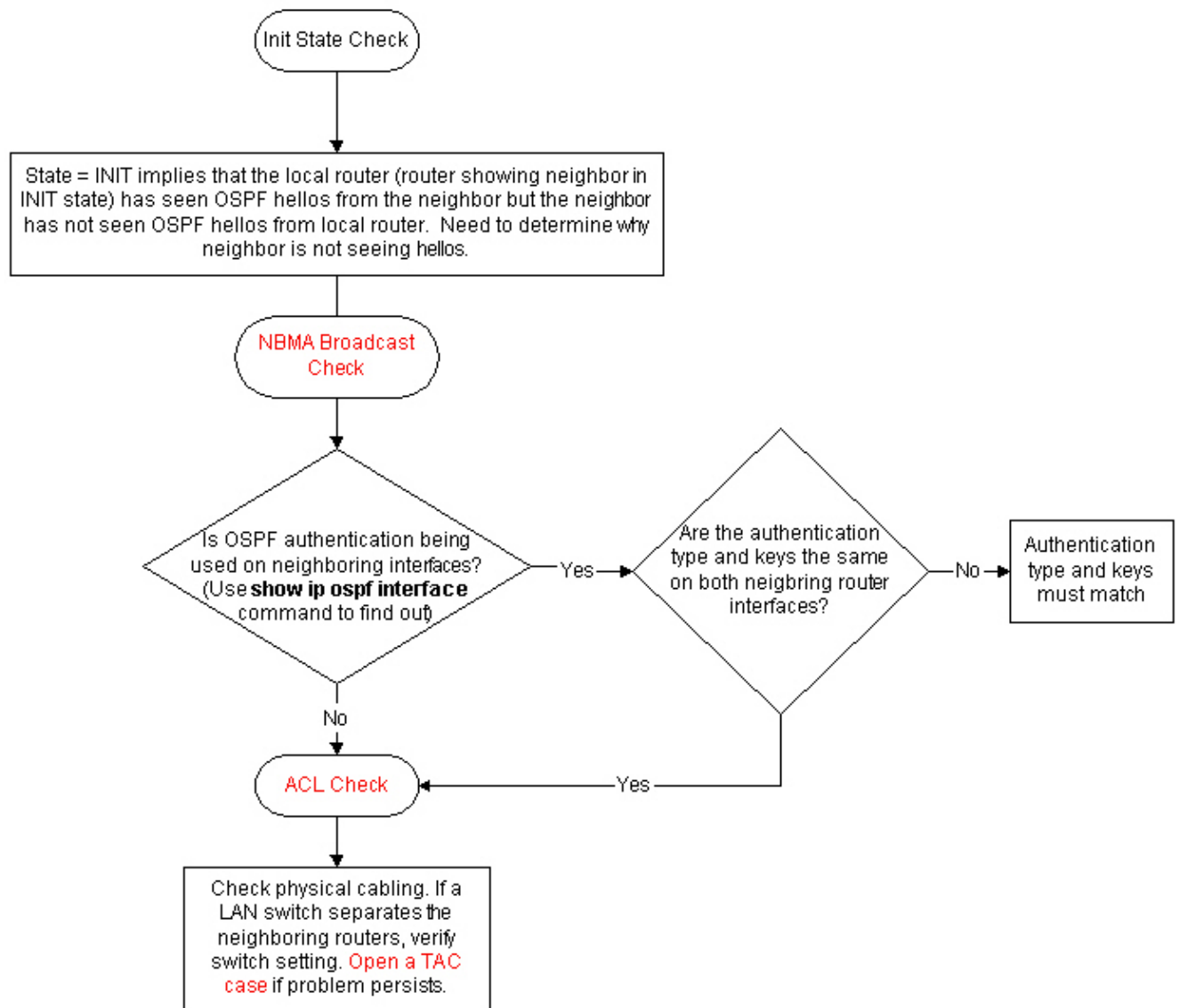
Troubleshooting OSPF Neighbor States



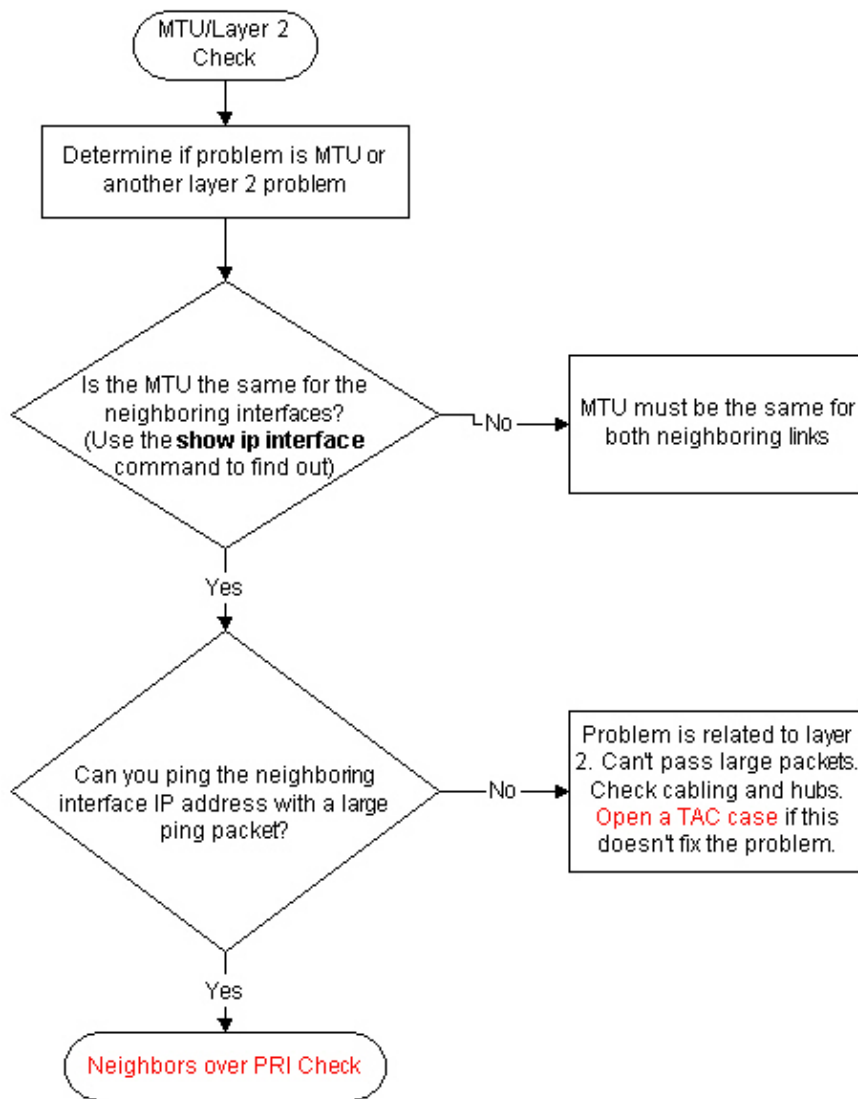
Troubleshooting the OSPF Routing Table



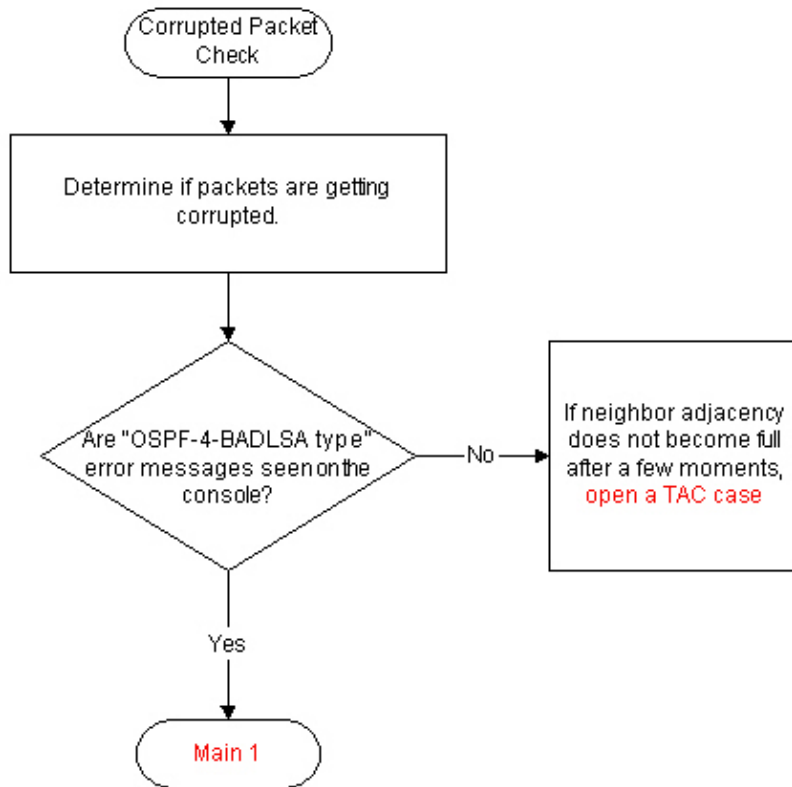
Troubleshooting OSPF Init State



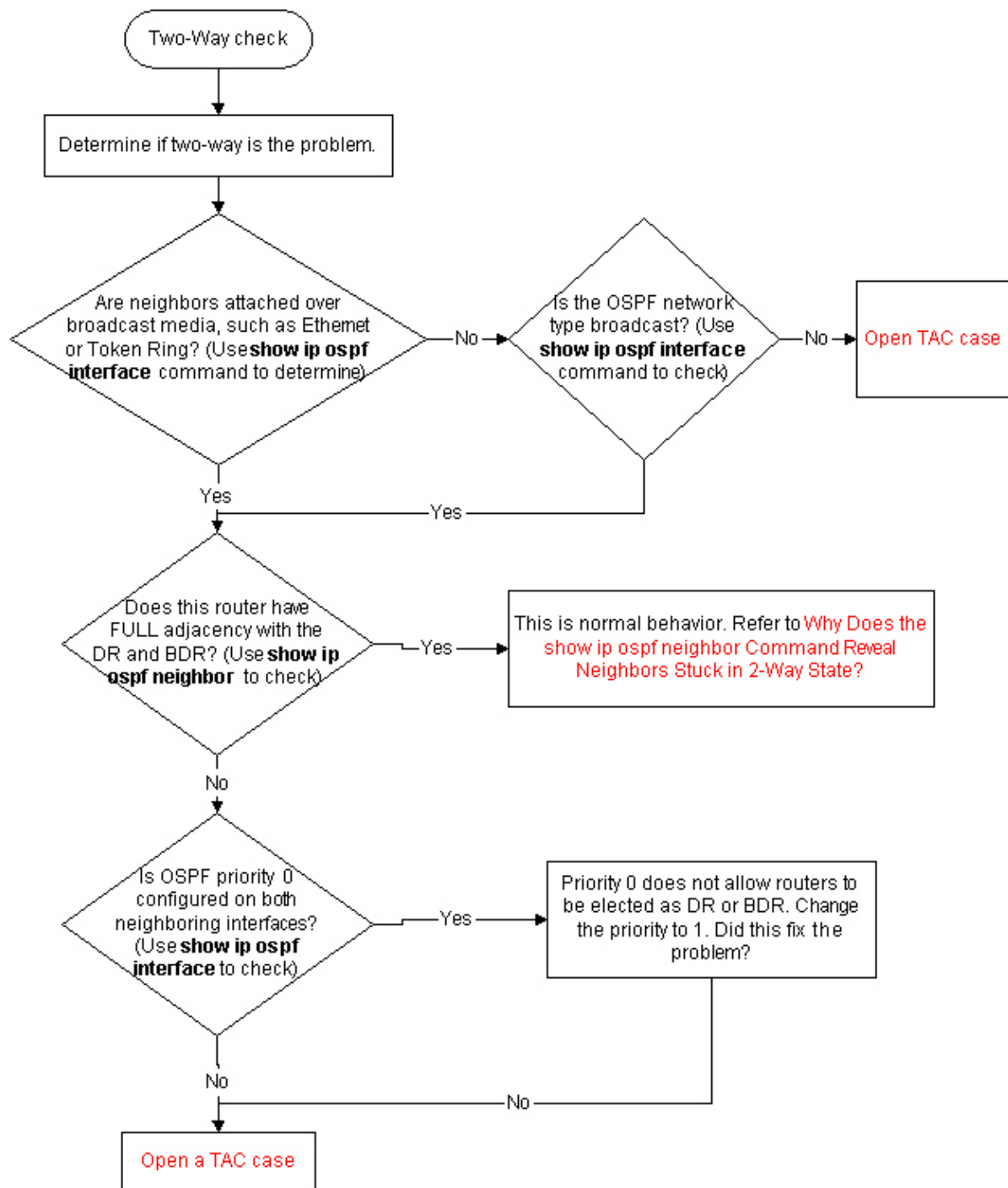
Troubleshooting OSPF MTU



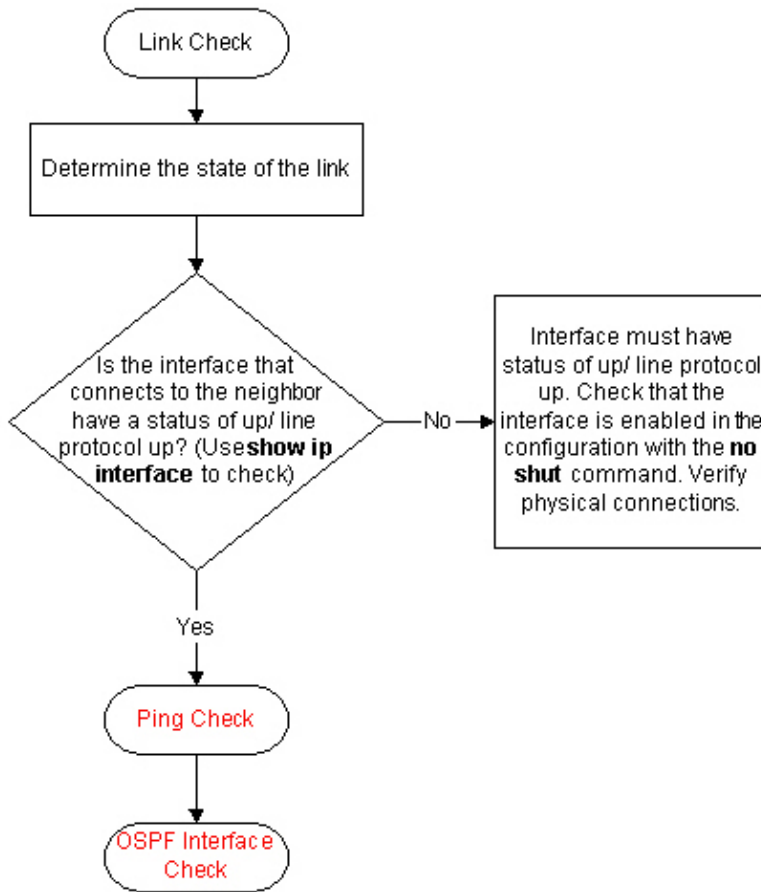
Troubleshooting OSPF Corrupt Packets



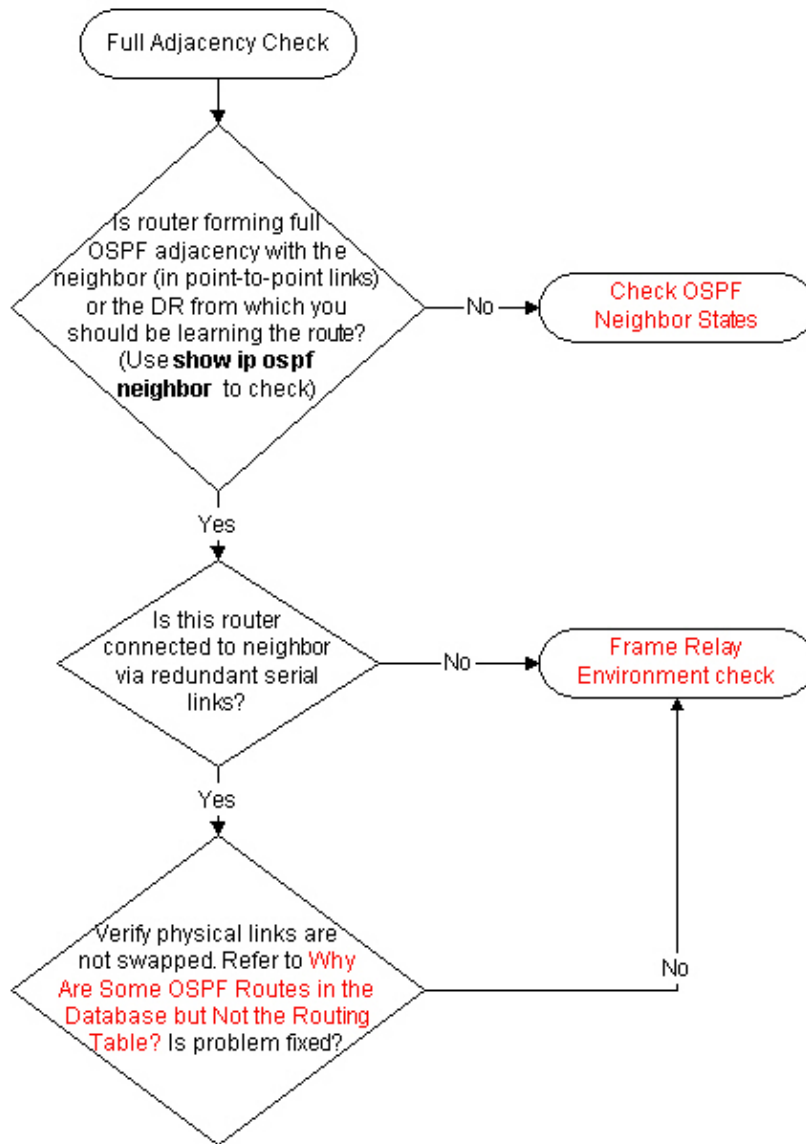
Troubleshooting OSPF Two-Way State



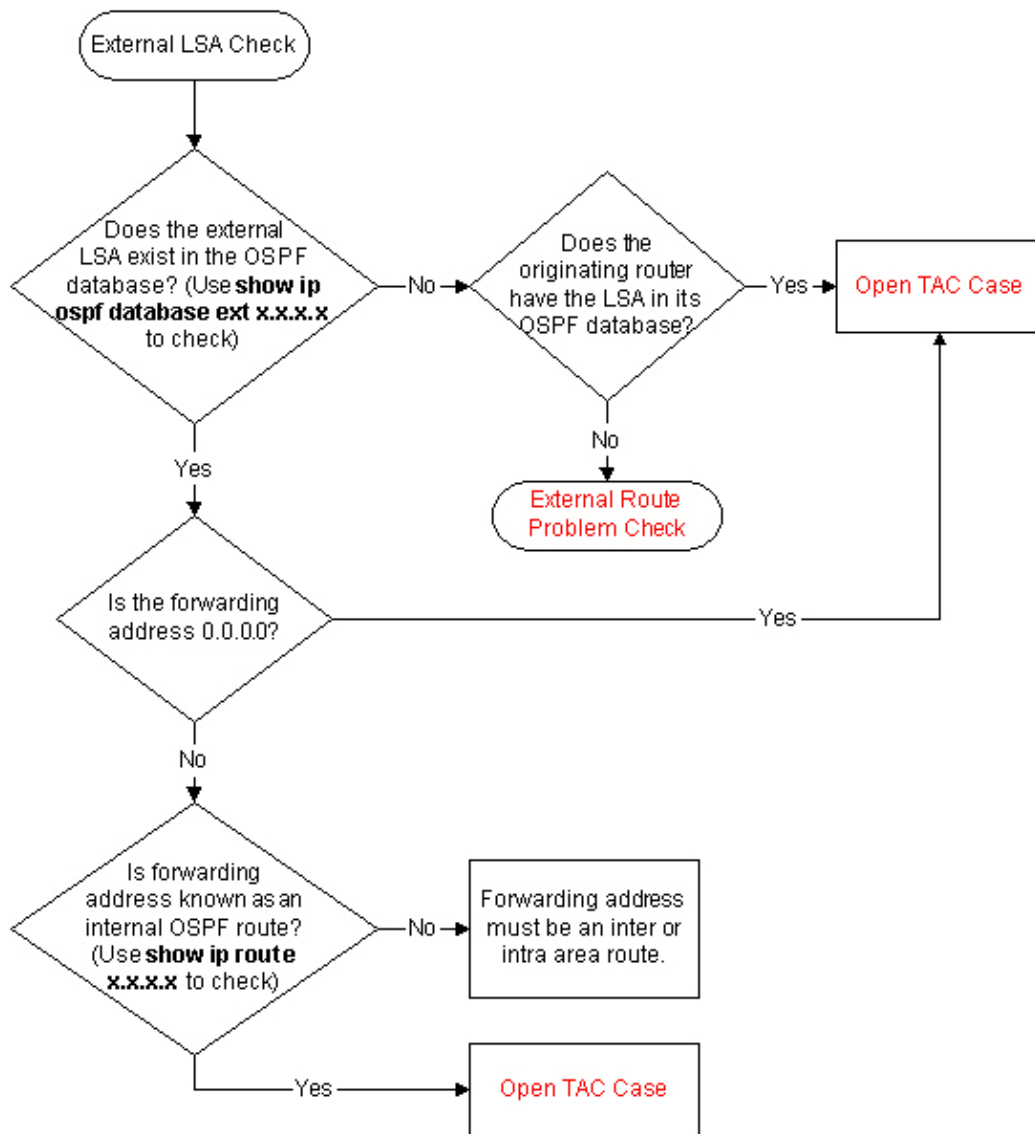
Troubleshooting OSPF Links



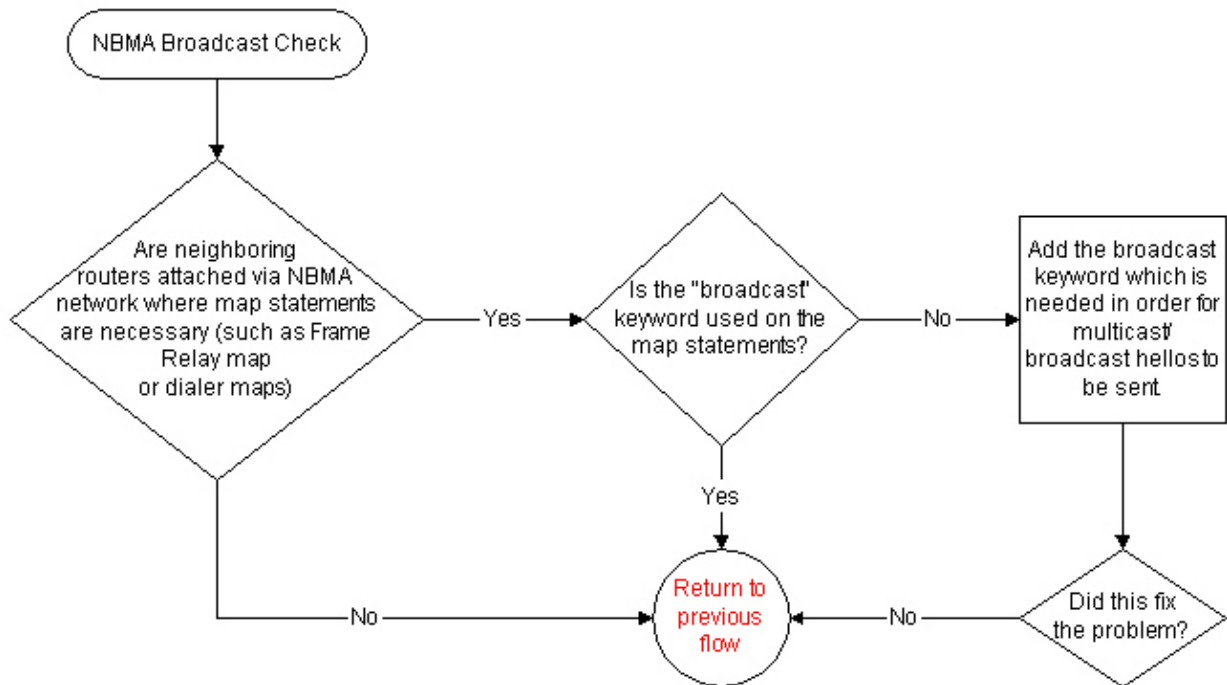
Troubleshooting Full Adjacency



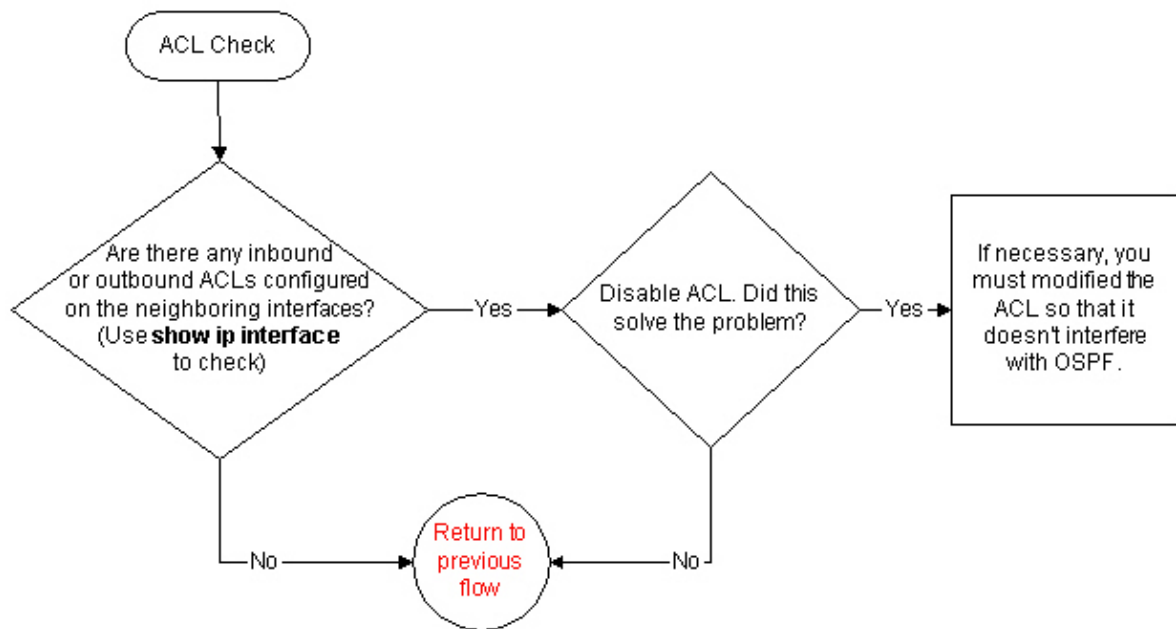
Troubleshooting External Link–State Advertisements



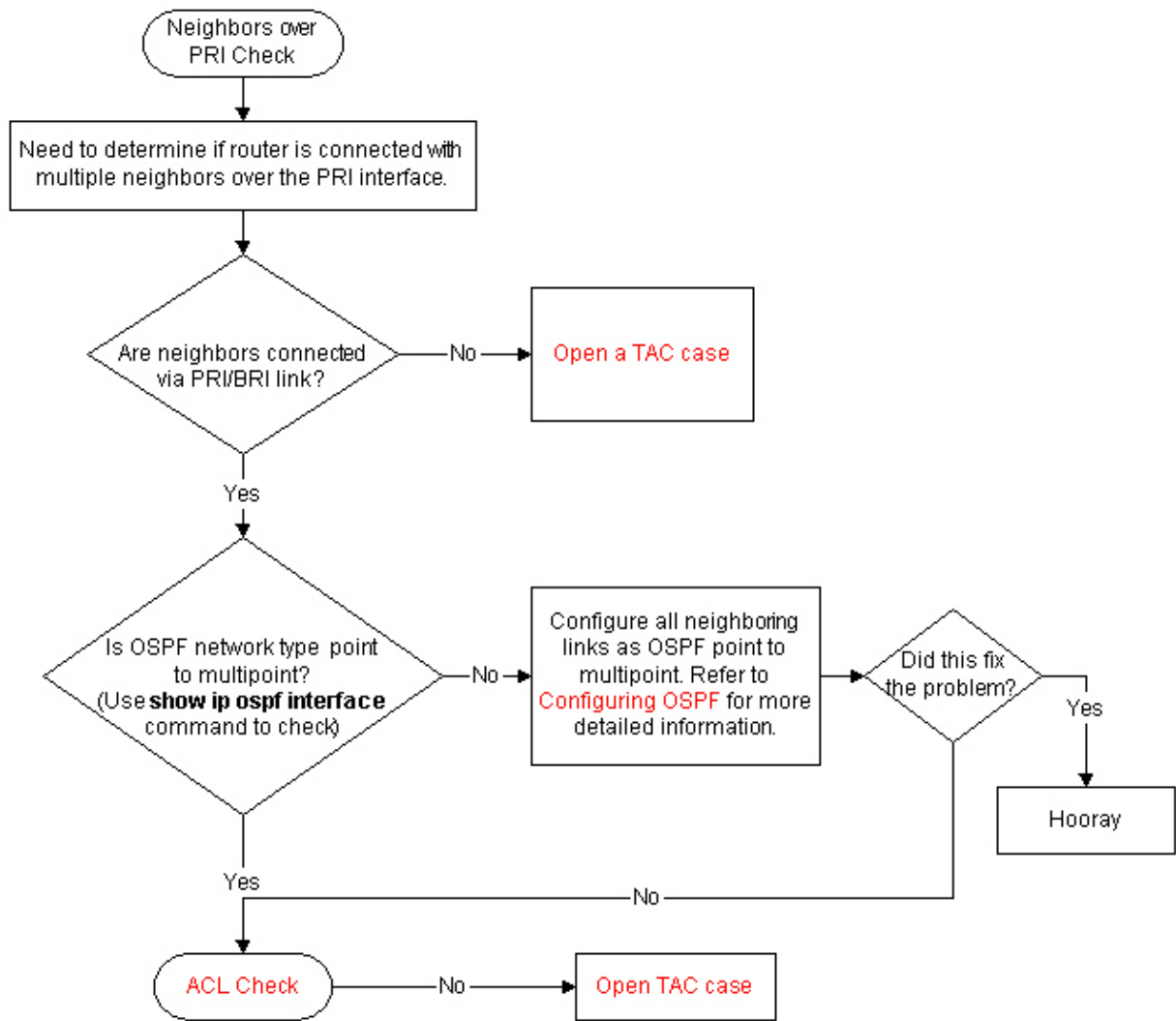
Troubleshooting OSPF NBMA Networks



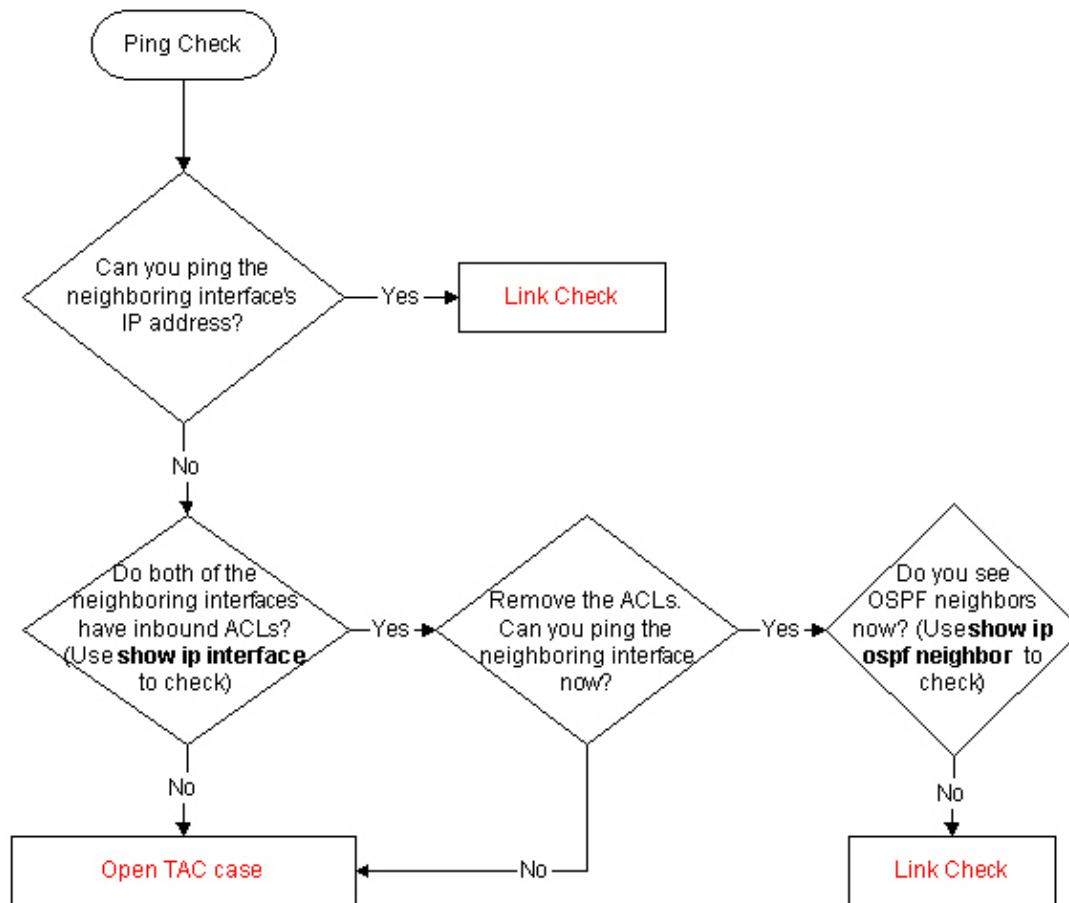
Troubleshooting Access Lists



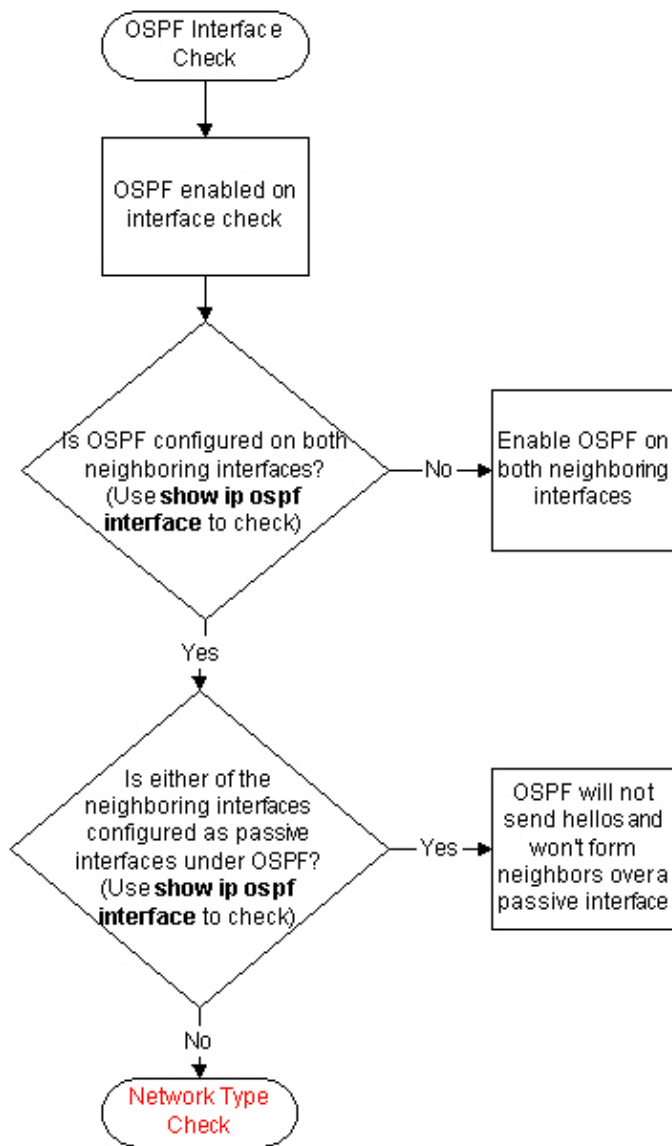
Troubleshooting Neighbors over PRI



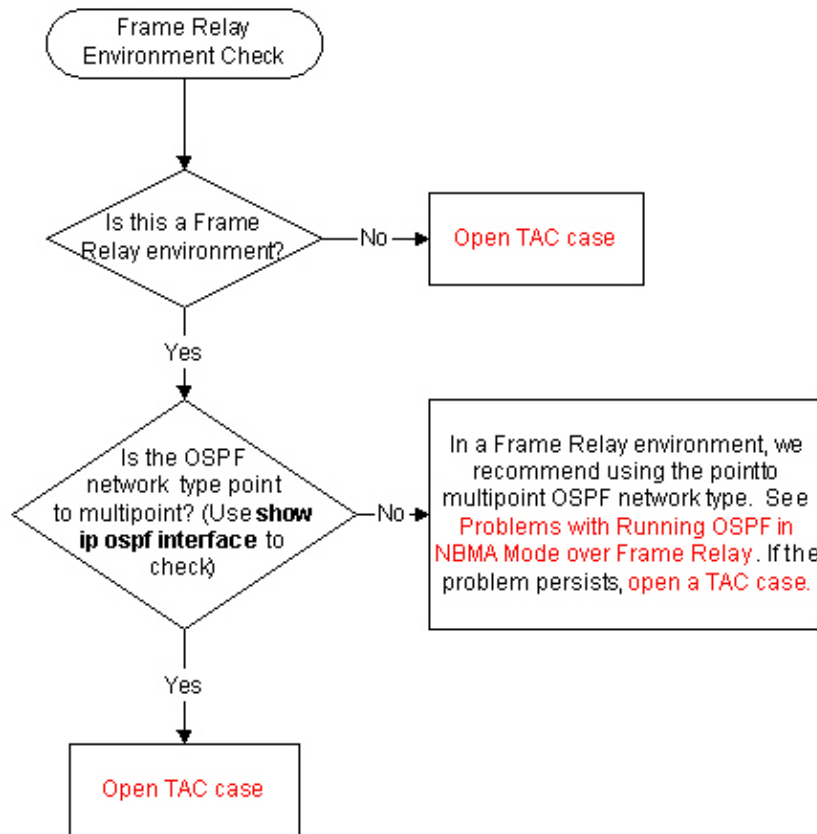
Troubleshooting Ping



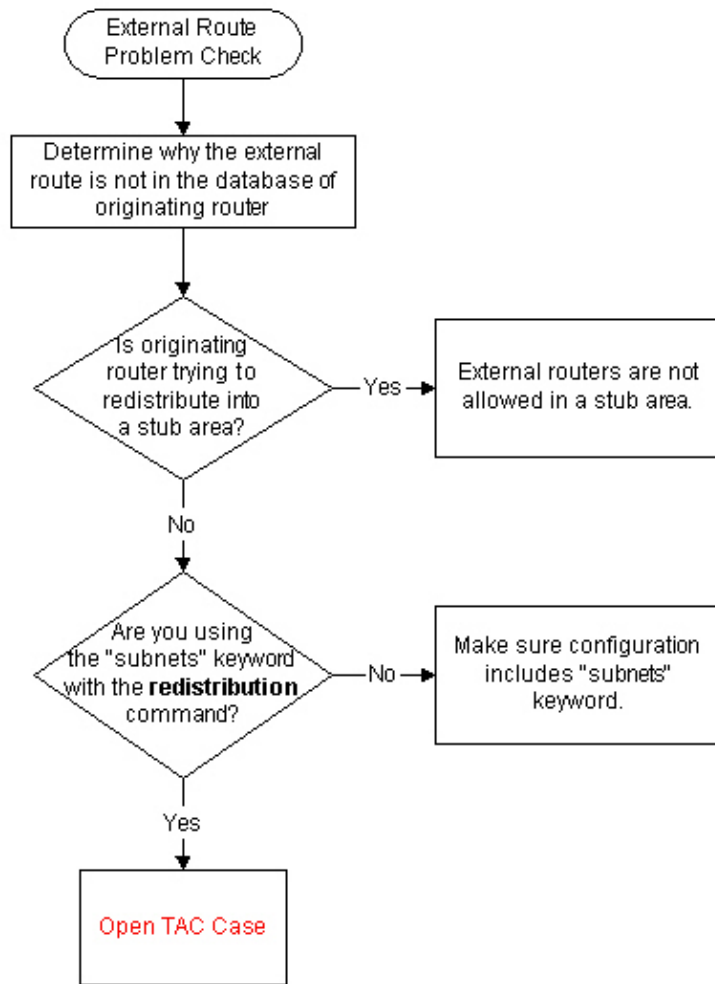
Troubleshooting the OSPF Interface



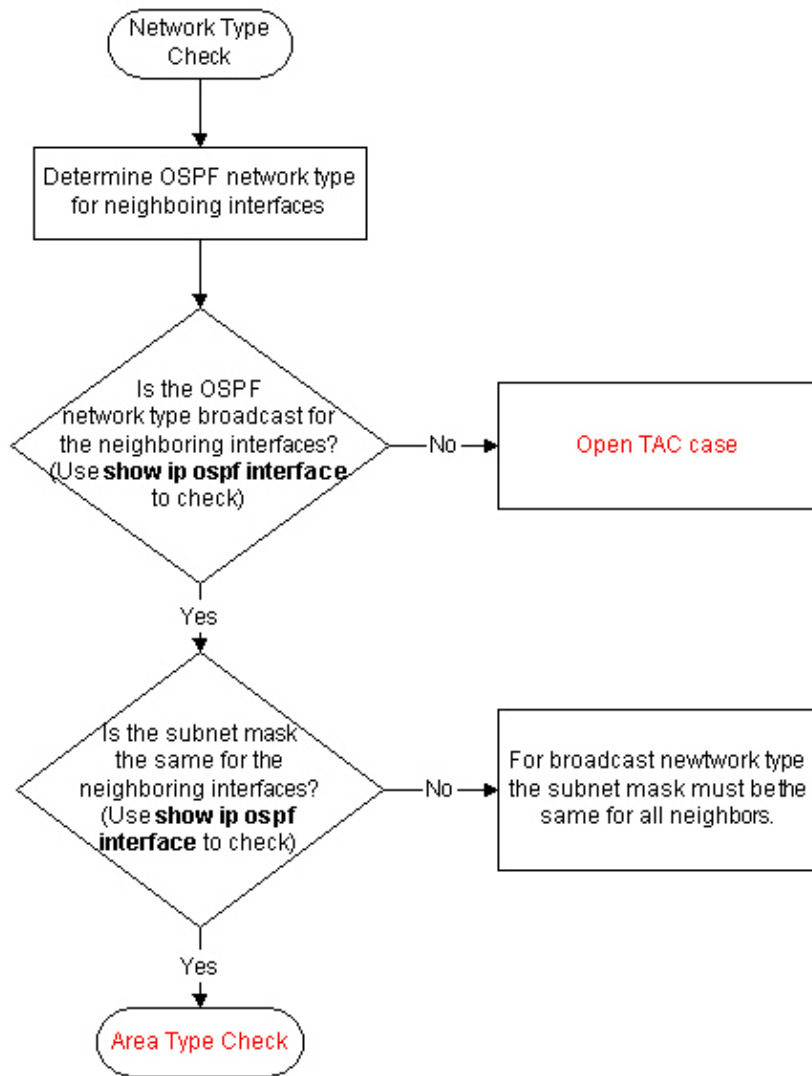
Troubleshooting Frame Relay Environment



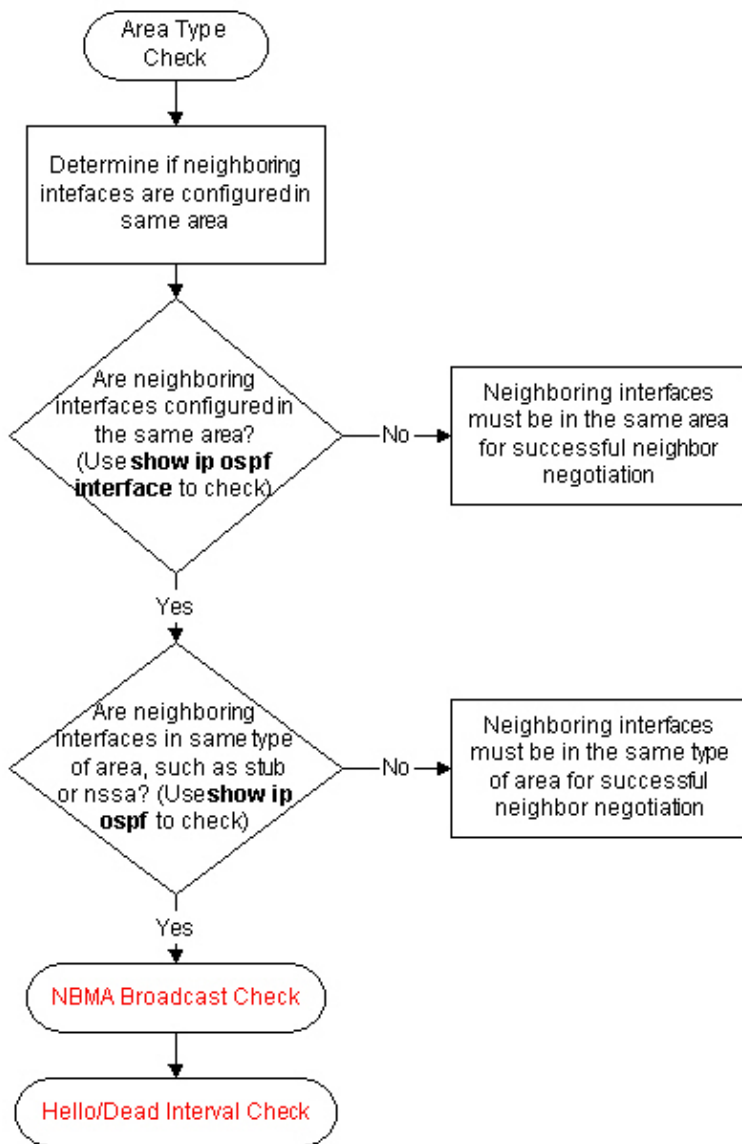
Troubleshooting External Route Problems



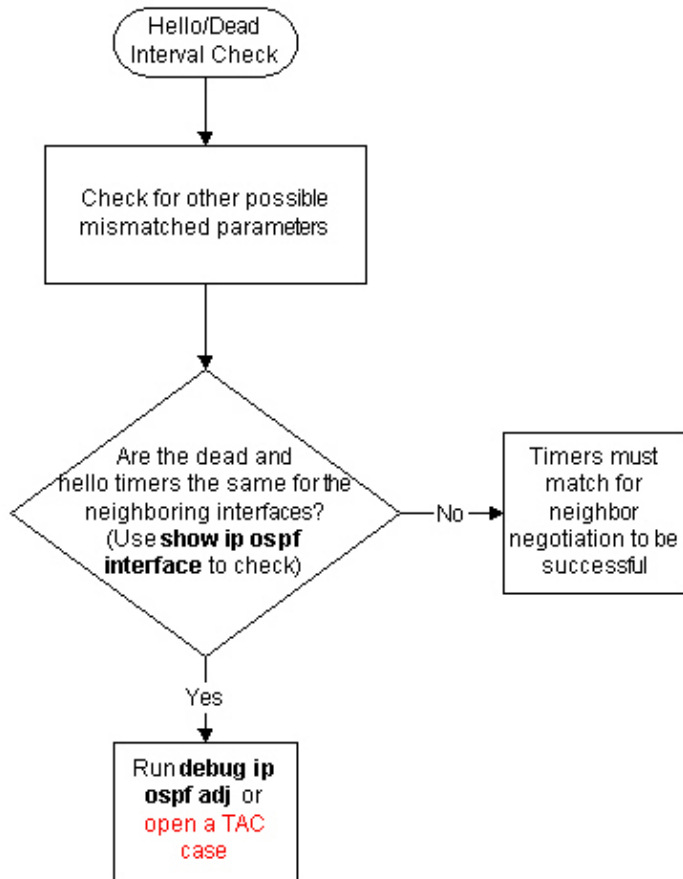
Troubleshooting Network Type



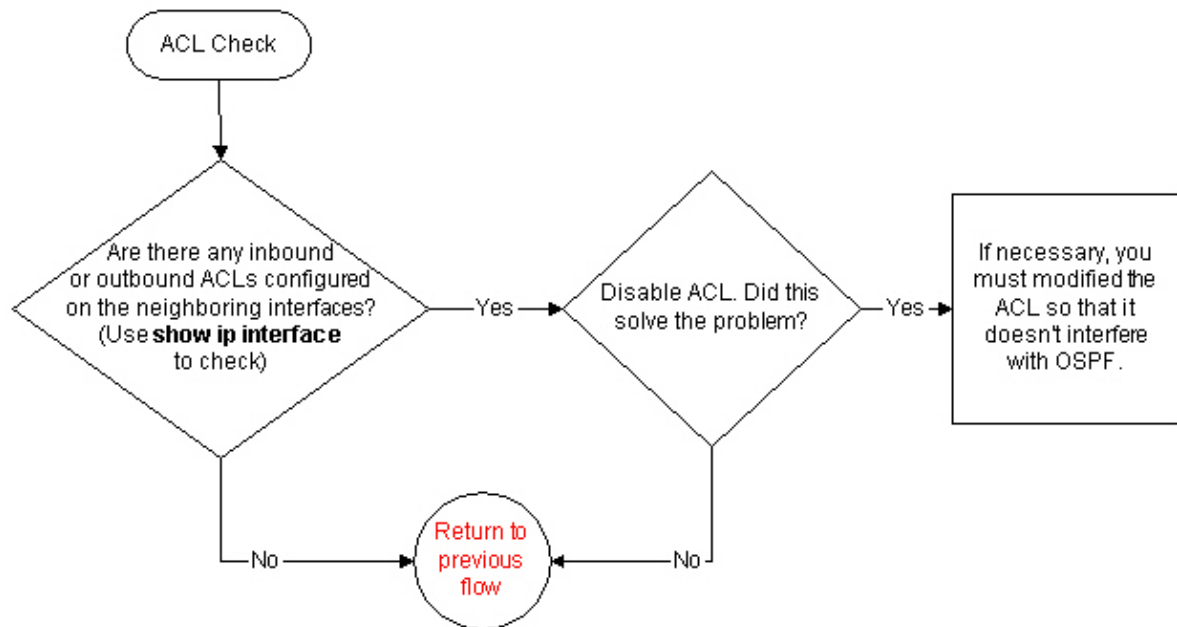
Troubleshooting OSPF Area Type



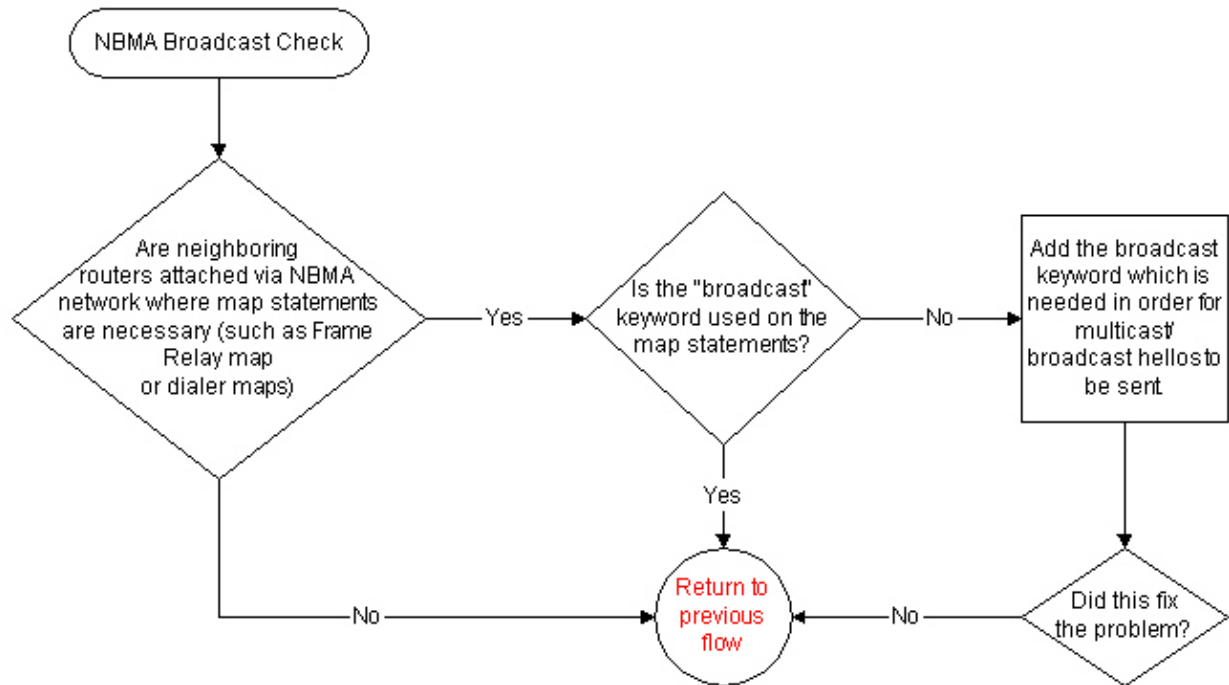
Troubleshooting the Hello/Dead Interval



Troubleshooting Access Lists



Troubleshooting OSPF NBMA Networks



Related Information

- [OSPF Support Page](#)
 - [Technical Support – Cisco Systems](#)
-

All contents are Copyright © 1992–2003 Cisco Systems, Inc. All rights reserved. Important Notices and Privacy Statement.